



Virginia Department of
Behavioral Health &
Developmental Services

DBHDS State Hospital Update

Behavioral Health Commission

October 18, 2022

Angela Harvell

Deputy Commissioner, Facility Services

Virginia Department of Behavioral Health

and Developmental Services

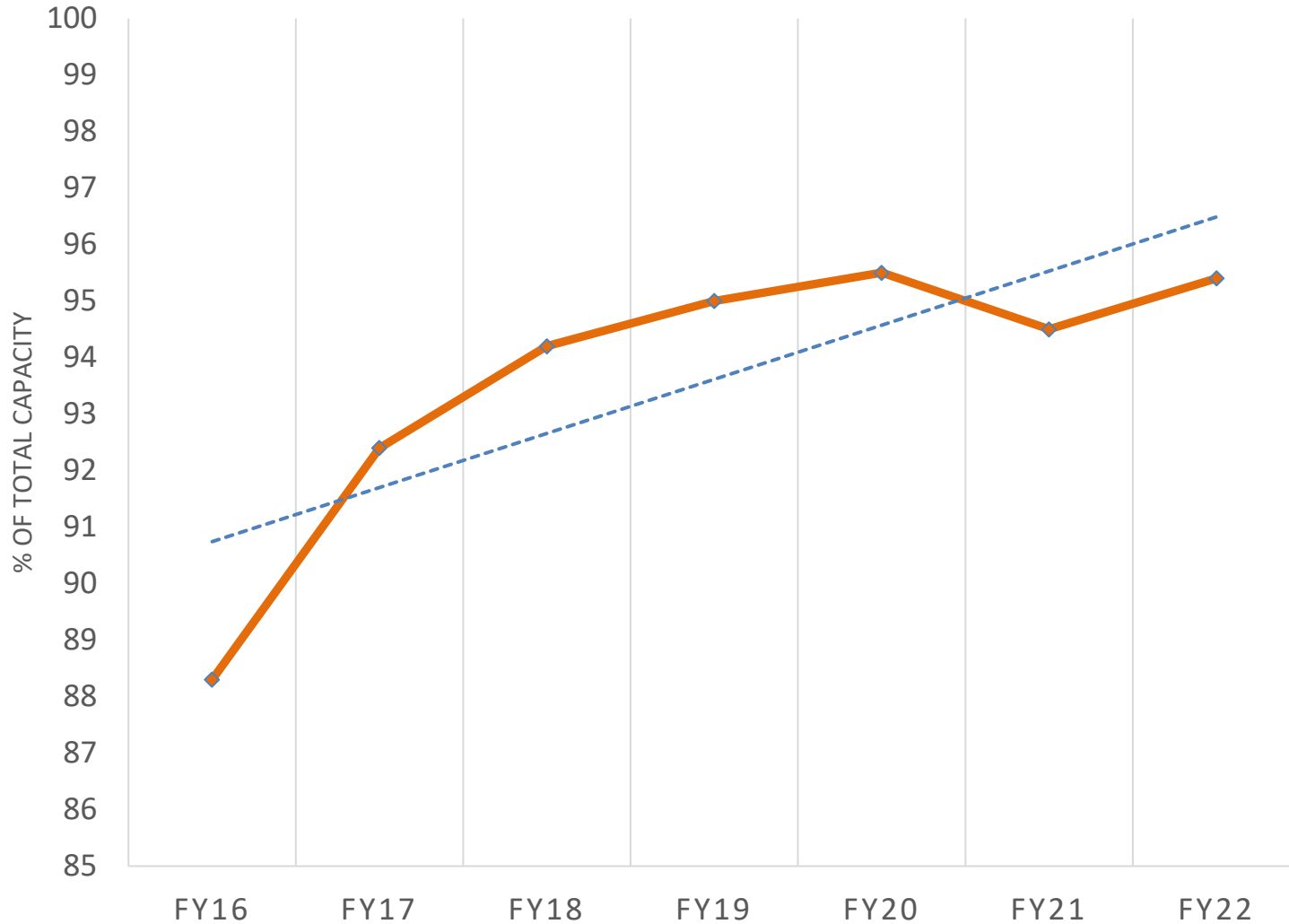
DBHDS Vision: A life of possibilities for all Virginians

State Hospital Census (10.13.22)

	Total Capacity (all admission types)	Current Capacity (staffed beds)*	Current Census 10.13.22	Total Utilization (staffed beds)	% Forensic Patients 9.30.22
Catawba (adult and geriatric)	110	102	102	100%	23%
Central State (excluding max security unit)	166	153	166	109%	89%
Eastern State (adult and geriatric)	302	245	260	106%	88%
Northern Virginia Mental Health Institute	134	128	125	98%	47%
Piedmont (all geriatric)	123	100	100	100%	17%
Southern Virginia Mental Health Institute	72	65	63	98%	69%
SW VA Mental Health Institute (adult & geriatric)	179	175	173	99%	20%
Western State	246	177	193	109%	67%
Commonwealth Center for Children & Adolescents	48	24	21	88%	n/a

(1) This is a point-in-time picture of the census on 10.13.22. The census fluctuates daily. There are times when all state hospitals are operating at 100% or more of their staffed capacity. (2) *Staffed beds may remain understaffed versus the staffing grid at a particular facility and/or unit. In that case, the staffing level to reduce incidents/injuries has been reached and is continuing to be monitored. (3) In addition to receiving forensic TDOs and restorations, adult civil patients are being medically cleared and/or are en route to fill open beds.

State Hospital Bed Utilization (FY 2016 – FY 2022)

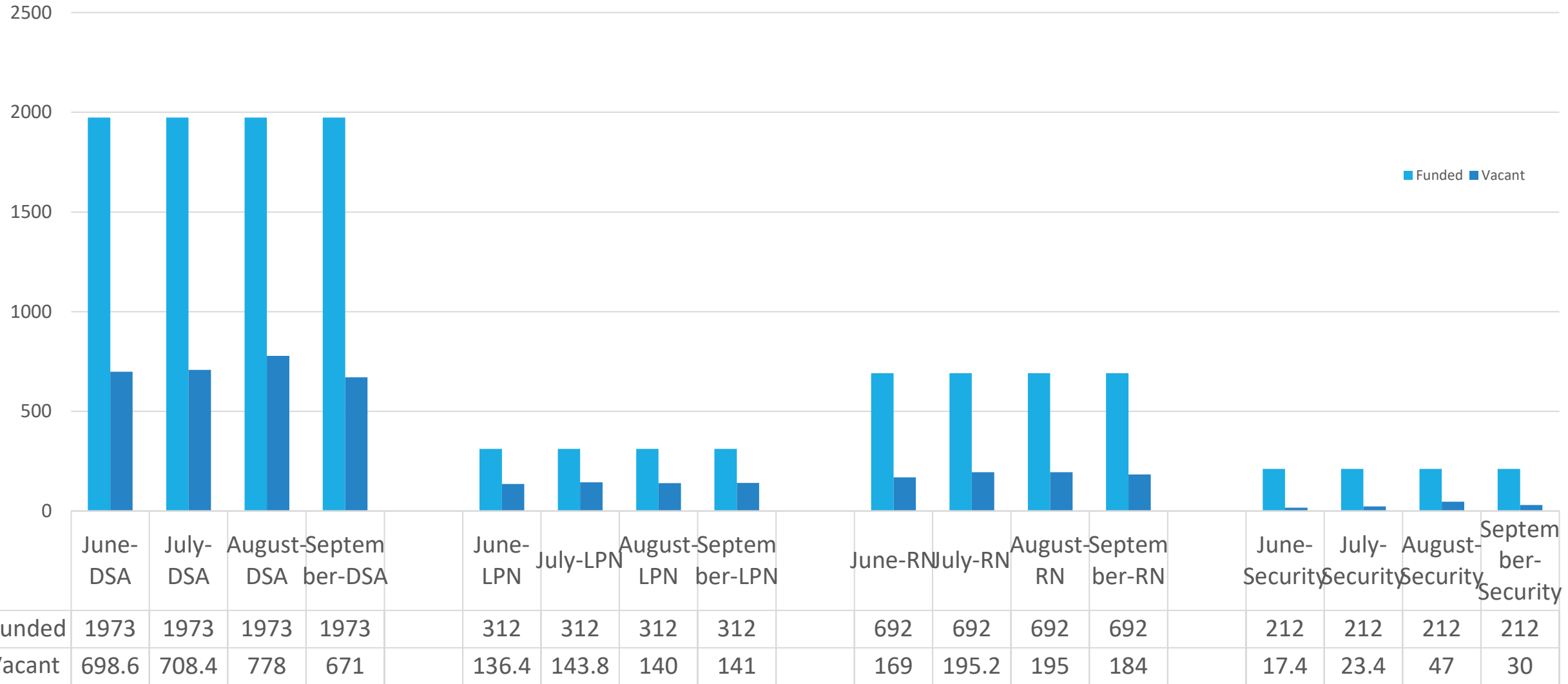


(1) Chart reflects utilization across eight adult mental health hospitals. At times, all hospitals are operating at 100% or more of their staffed capacity.

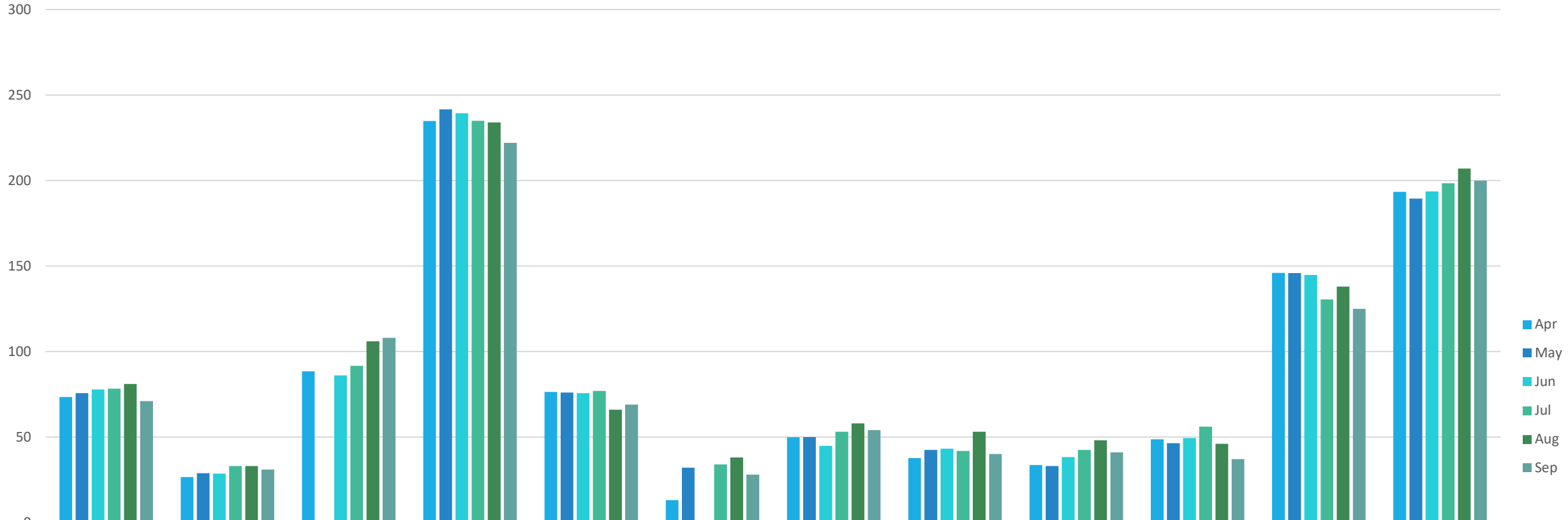
(2) Portions of FY 2021 and FY 2022 are calculated using staffed beds because of the bed closures starting in July 2021.

(3) Safe staffing utilization is considered to be 85%

DBHDS Vacancies by Role and Month



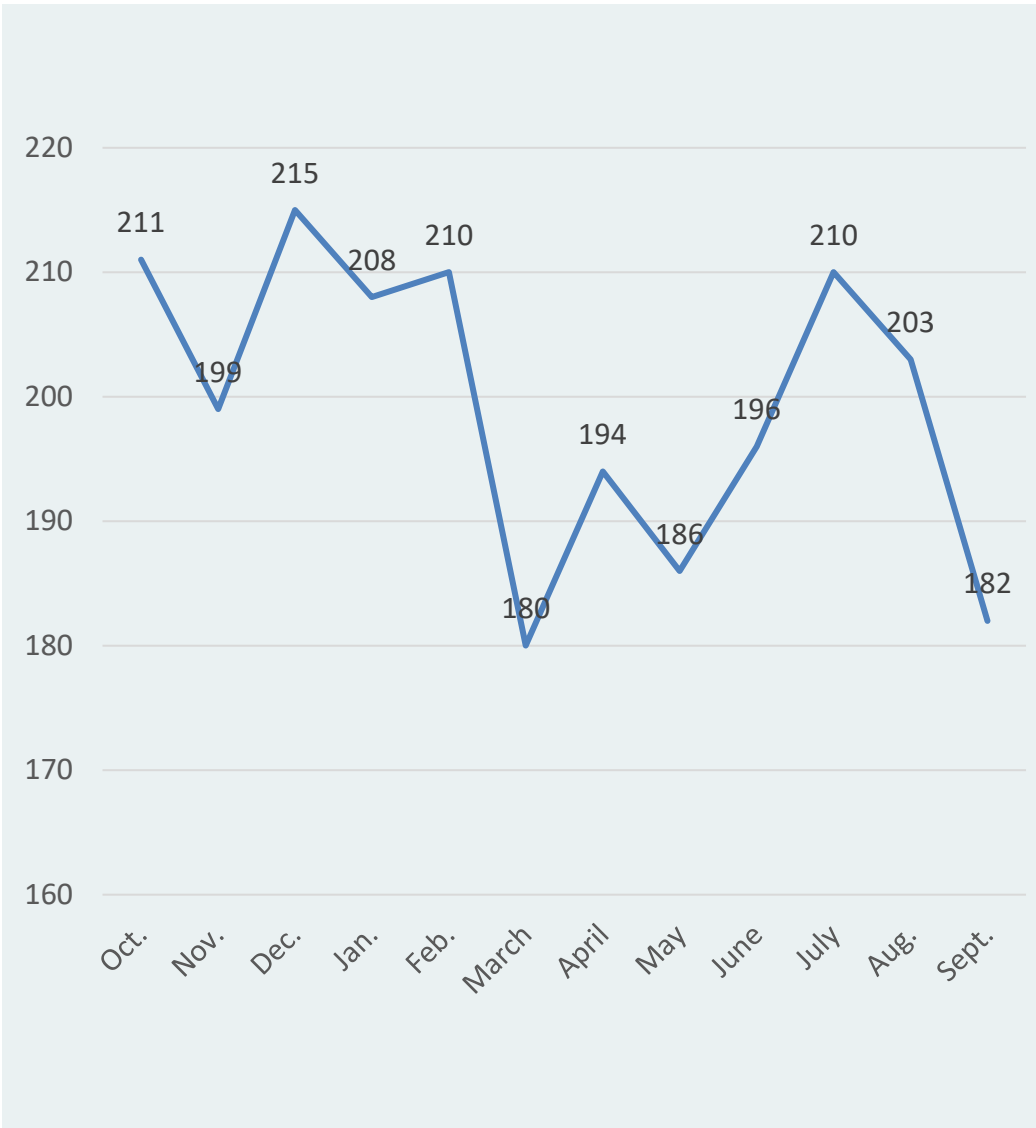
DSA, LPN, RN, Security Vacancies by Facility and Month



■ Apr
■ May
■ Jun
■ Jul
■ Aug
■ Sep

	CCCA	CH	CSH	ESH	HDMC	NVMHI	PGH	SEVTC	SVMHI	SWVMHI	VCBR	WSH
Apr	73.4	26.6	88.4	234.8	76.4	13	49.8	37.6	33.6	48.6	146	193.4
May	75.6	28.8		241.6	76	32	50	42.4	33	46.4	145.8	189.4
Jun	77.8	28.6	86	239.4	75.6		44.8	43.2	38.2	49.4	144.8	193.6
Jul	78.2	33	91.6	235	77	34	53	41.8	42.4	56	130.4	198.4
Aug	81	33	106	234	66	38	58	53	48	46	138	207
Sep	71	31	108	222	69	28	54	40	41	37	125	200

FY 2022 Extraordinary Barriers to Discharge List (as of Sept 2022)



Primary barrier	# of patients	% of EBL
Awaiting completion of CSB dc planning tasks	33	18%
Awaiting discharge-discharge date scheduled	37	20%
DD waiver process	0	0%
Evaluation Pending	0	0%
Guardianship Barriers	9	5%
NGRI Process	41	23%
No willing provider ALF	20	11%
No Willing Provider - ID/DD Services	8	4%
No Willing Provider - NH	14	8%
No Willing Provider - Other	7	4%
Other	4	2%
Patient and/or family/AR is resistant to discharge	9	5%
Total	182	